



Enviroplan Consulting

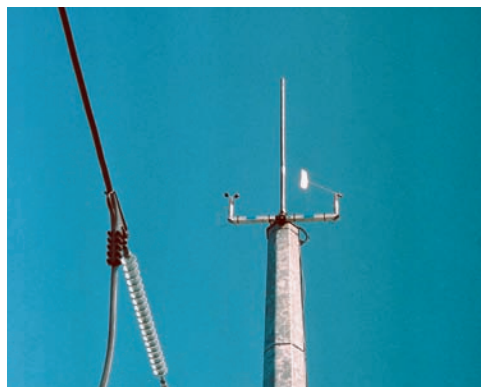
Wayne Plaza II
155 Route 46 West
Wayne, NJ 07470
973 575 2555 Phone
973 256 2200 Fax
contact@enviroplan.com
www.enviroplan.com

Enviroplan Consulting is one of the major meteorological consulting companies in the U.S. providing meteorological equipment, monitoring services and wind resource analyses.

Since 1972, we have conducted over 4,000 meteorological and air pollution studies and monitoring programs for over 350 industrial and governmental clients in 25 states and Puerto Rico. We are located in 14 offices and project locations throughout the U.S. and Canada.

www.enviroplan.com

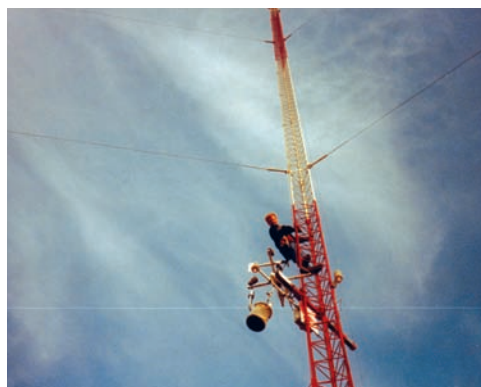
www.enviroplan.com



Anemometer and vane monitoring system installed and operated by Enviroplan Consulting at a site located northwest of Indianapolis, IN. Instruments were installed on an existing utility-owned monopole to minimize project costs.



Anemometer, vane and air temperature instrument cluster mounted on extendable boom at 100m level of tower installed and operated by Enviroplan Consulting in Dinwiddie County, VA.



Enviroplan Consulting technician conducts performance tests and maintenance on 100m, multi-level meteorological monitoring system installed and operated by us in Jasper County, IN.

Meteorological Monitoring Services

-Site evaluation
-System design
-Equipment supply
-Installation
-Operation and maintenance
-Data acquisition, analysis and reporting
-Quality Assurance.

Monitoring Experience

Over 2,500 parameters for over 8,400+ parameter-years in over 120 networks since 1972.

Performance:
100% of monitoring networks have met or exceeded valid data collection requirements.

Wind Resource Analysis Services

-Identify sites satisfying wind resource, transmission line infrastructure and other requirements
-Turbine site suitability studies
-Analyze wind monitoring data
-Project wind monitoring data to blade environment and other nearby locations
-Optimize wind turbine site locations
-Analyze wind resources and power output potential for project financing
-Quantify power output uncertainties
-Conduct Viewshed and Shadow Flicker analyses
-Certify results and prepare expert reports.

Wind Resource Analysis Experience

Over 30 years experience in:

-Statistical analyses of wind monitoring data
-Projection of monitored wind data to surrounding locations
-Use of wind data from the National Climatic Data Center and NOAA
-Meteorological consulting work for more than 50 electric power companies

Additional experience in:

-Analyzing nationwide grid cell WRF and MM5-generated meteorological data
-Use of WINDPRO[®] for Wind Resource, Viewshed, Shadow Flicker and other analyses
-Other wind resource analyses.

